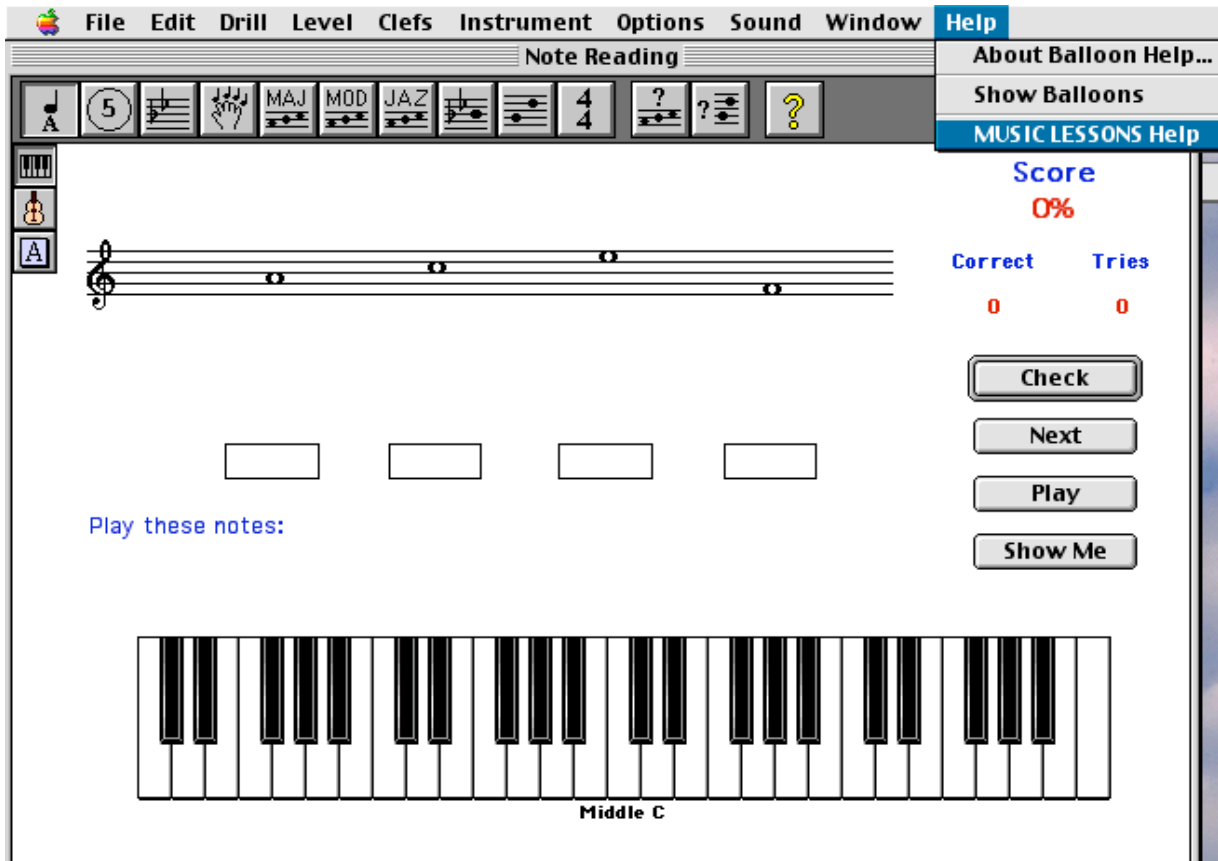


Choral Music/Choir Written Testing Units

This written testing program is designed for the Music Lessons 1 and Music Lessons 2 theory programs from MiBac Music. All the information you need to run the program and all of the instructional information you need to successfully complete each level of testing can be found in the program. Go to the "Help" menu and select "MUSIC LESSONS Help."



You can then select the appropriate category for whatever unit you are on. Under the topic "Manual," you will find a general overview of the Music Lessons program. Under the topic "Instructions," you will find details of how to use this program. If you need further assistance, please ask Mr. Habermann for help.

There are ten levels of testing for Music Lessons 1. They are:

1. Note Reading
2. Note/Rest Durations
3. Key Signatures
4. Major/Minor Scales
5. Scale Degrees
6. Ear Training - Scales
7. Intervals, Level 1
8. Intervals, Level 2
9. Ear Training - Intervals, Level 1
10. Ear Training - Intervals, Level 2

Unit 1 - Note Reading

This unit is designed to insure that you can read notes in both treble and bass clef. For most of you, this is a review of some basic elements of theory you have already studied in previous music classes and performing groups.

Before beginning this unit, you should select Music Lessons Help from the Help menu and read the information listed under the heading of "Theory." Pay special attention to the information given about pitch, the musical alphabet, the music staff, lines and spaces, ledger lines, and accidentals. Also read through the information given on clefs. You will need to know both treble and bass clef but **not** alto or tenor clef.

Setting the Program for the Written Test

Please follow these directions for taking the test for Unit 1.

1. Open Music Lessons 1. It will automatically start on the Note reading Drill.

File Edit Drill Level Clefs Instrument Options Sound Window Help

Note Reading

Score
0%

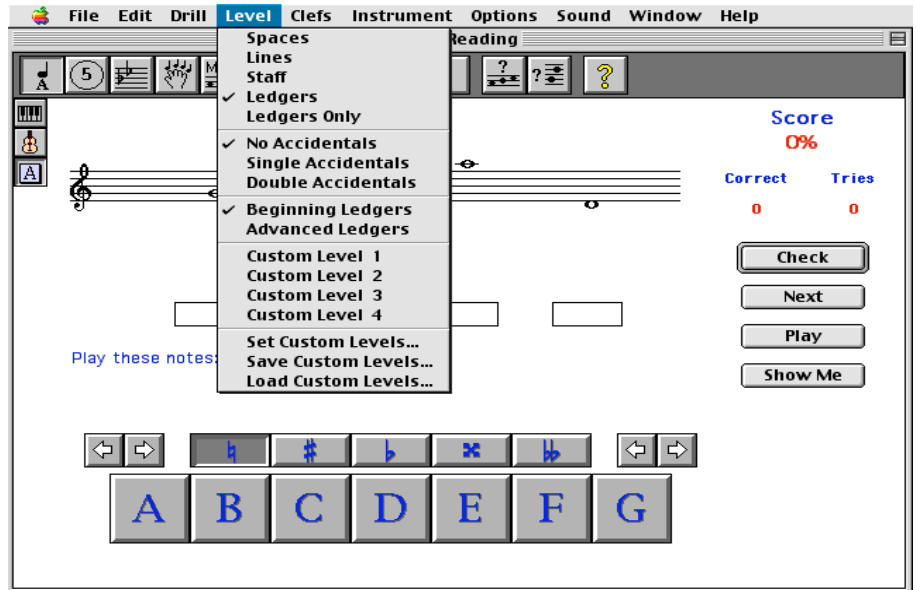
Correct Tries
0 0

Check
Next
Play
Show Me

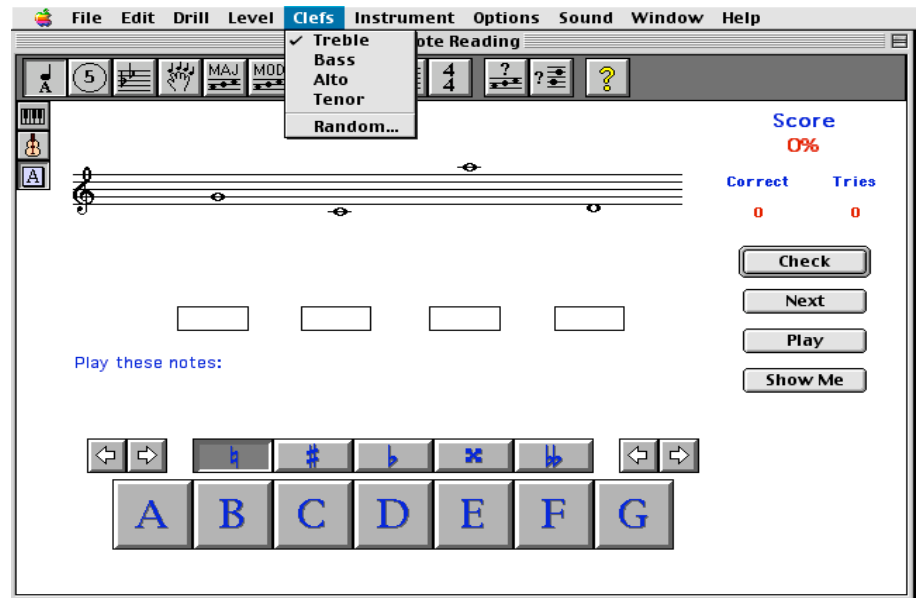
Play these notes:

A B C D E F G

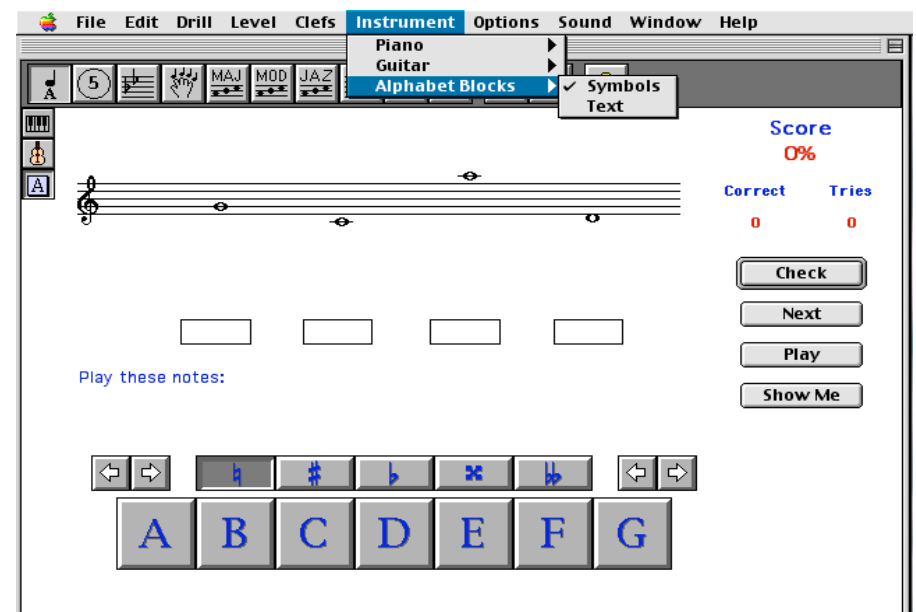
2. Under the “Level” menu, select Ledgers, No Accidentals, and Beginning Ledgers.



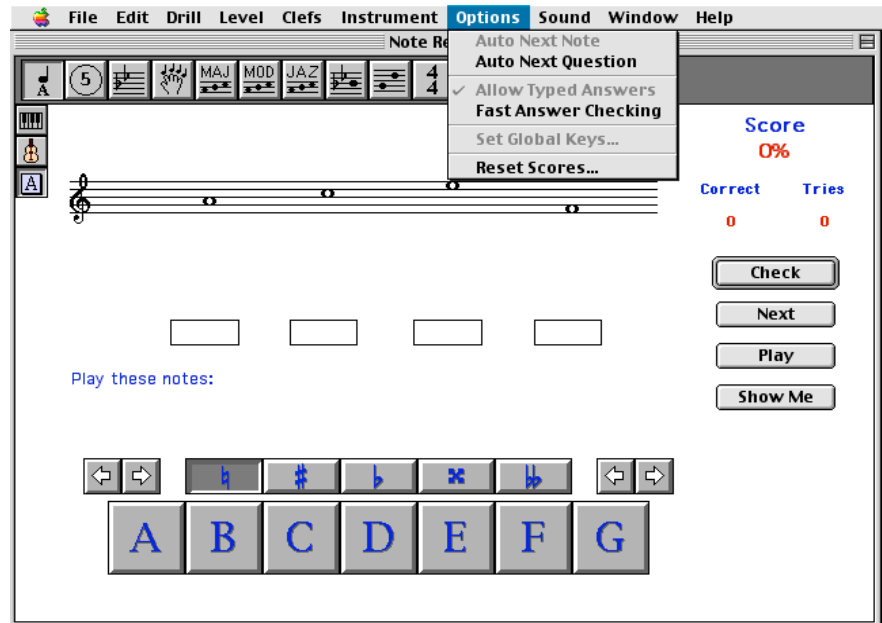
3. Under the “Clefs” menu, select Treble.



4. Under the “Instrument” menu, select Alphabet Blocks and Symbols.



5. Make sure that nothing is checked under the “Options” menu.



6. Name 40 notes in treble clef (10 screens of 4 notes each.)

7. Select Bass under the “Clefs” menu. Name 40 notes in bass clef.

8. After naming 40 treble clef notes and 40 bass clef notes, choose “Single Accidentals” under the “Level” menu. Name 20 more notes with accidentals.

You may choose either treble or bass clef for these last 20! Select whichever you prefer under the “Clefs” menu.

9. After you have completed naming all 100 notes, print out a progress report to hand in. Under the “File” menu, select “New Progress Report.” Type in your name and select print. Make sure you have selected the appropriate printer from the Chooser. You may also e-mail your progress report to Mr. Habermann as an attachment.

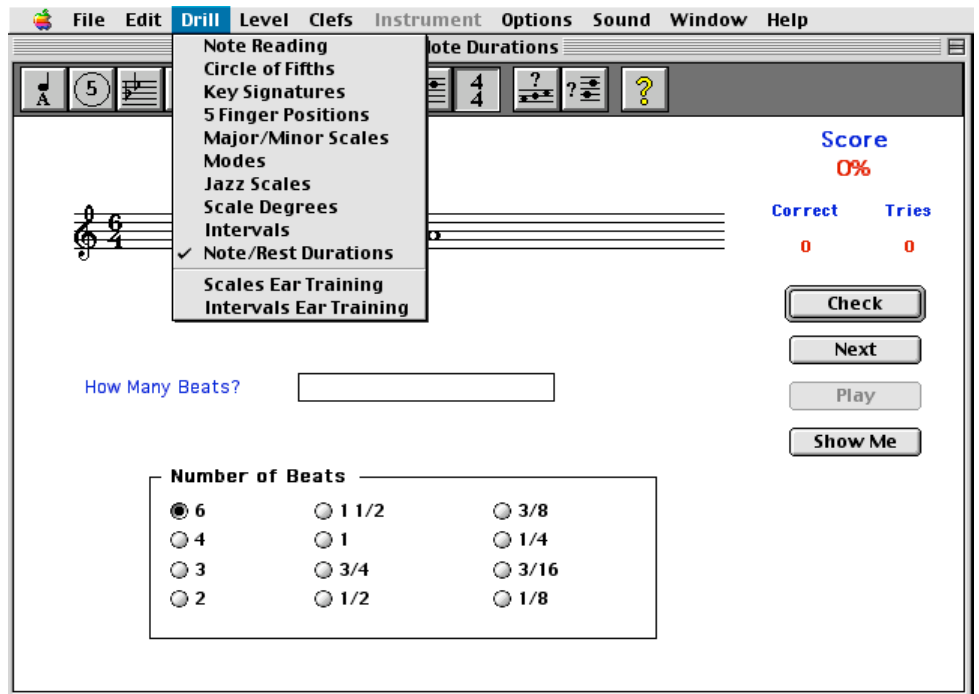
Unit 2 - Note/Rest Durations

In this unit you will review the rhythmic values of notes and rests in different time signatures. Before beginning, you should select Music Lessons Help from the Help menu and read through the information on Note Rest Durations found under the heading of Note Reading. For this unit, you will be required to name the value given to notes and rests in time signatures where the half note, quarter note, or eighth note get one count.

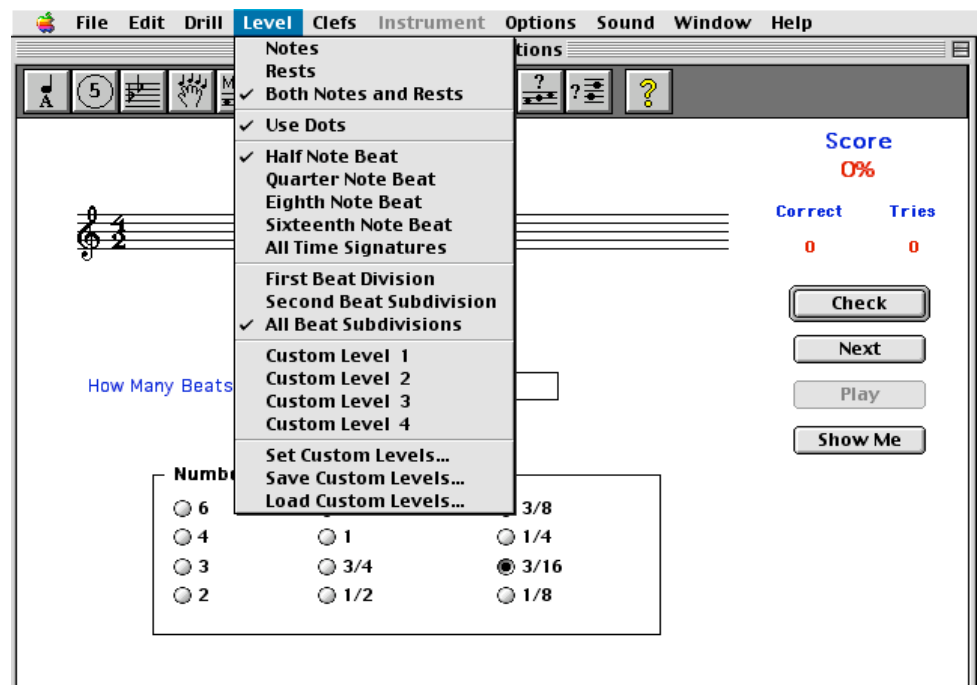
Setting the Program for the Written Test

Please follow these directions for taking the test for Unit 2.

1. Open Music Lessons 1 and select Note/Rest Durations from the “Drill” menu.



2. Under the “Level” menu, select Both Notes and Rests, Use Dots, Half Note Beat, Quarter Note Beat, Eighth Note Beat, Sixteenth Note Beat, and All Time Signatures.



3. You may select either Treble or Bass under the “Clefs” menu.
4. Make sure that nothing is selected under the “Options” menu.
5. Answer 35 questions with the half note as the beat.
6. Select Quarter Note Beat under the “Level” menu and do 30 questions.
7. Select Eighth Note Beat from the “Level” menu and do 35 more questions.
8. After you have completed all 100 questions, print out a progress report to hand in. Under the “File” menu, select “New Progress Report.” Type in your name and select print. Make sure you have selected the appropriate printer from the Chooser. You may also e-mail your progress report to Mr. Habermann as an attachment.

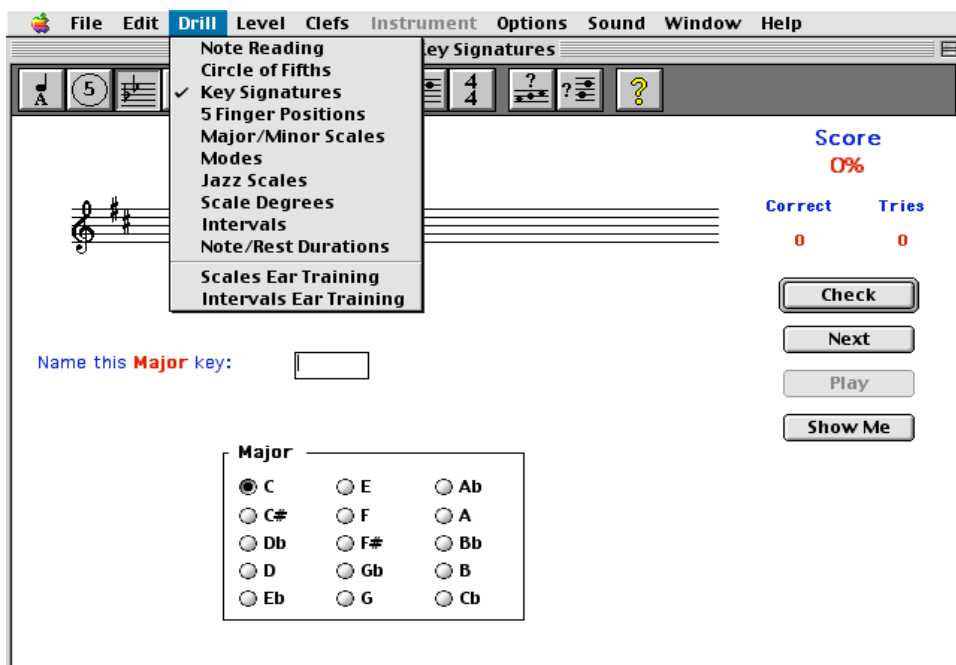
Unit 3 - Key Signatures

In this unit you will work on being able to correctly identify the name of both major and minor key signatures. Before beginning, you should select Music Lessons Help from the Help menu and read through the information on Key Signatures found under the heading of Drills. Pay special attention to the rules it gives for figuring out the name of key signatures when dealing with flats or sharps (and minor keys!) For the test, you will be required to name the key, either major or minor, by looking at the key signature. You will be tested in both treble and bass clef.

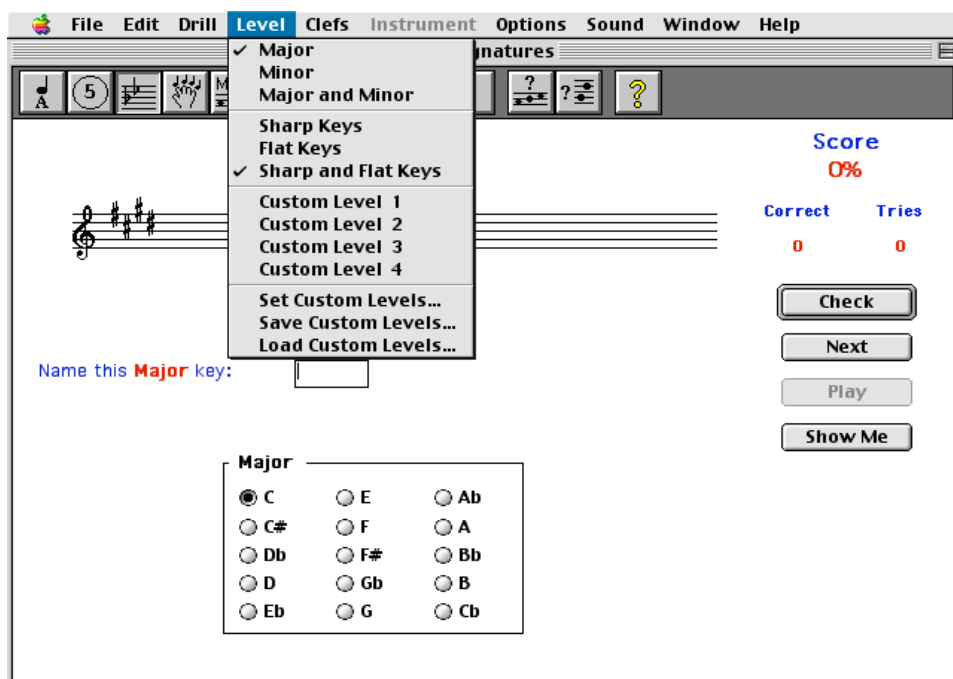
Setting the Program for the Written Test

Please follow these directions for taking the test for Unit 3.

1. Open Music Lessons 1 and select Key Signatures from the “Drill” menu.

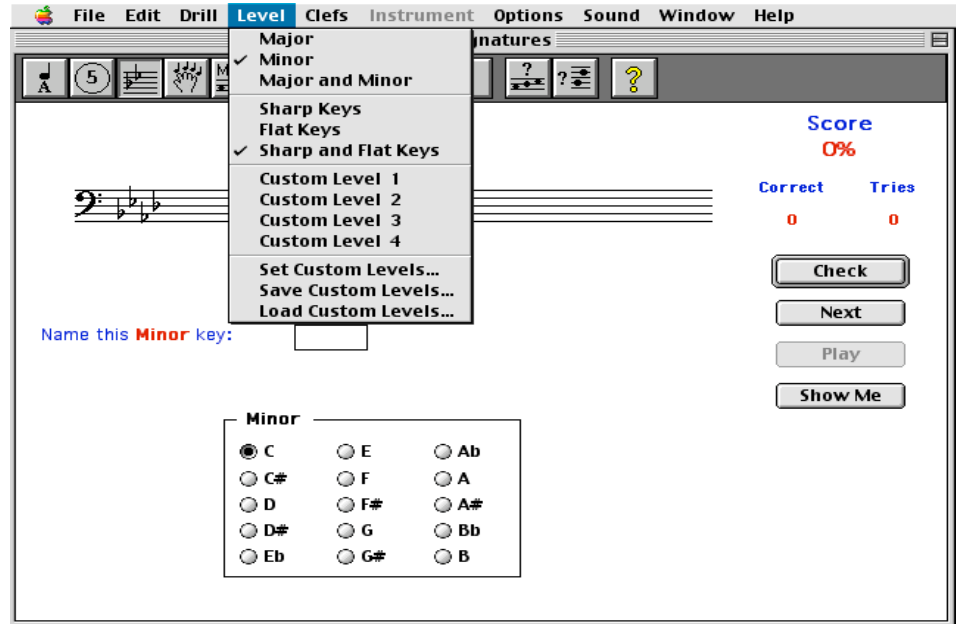


2. Under the “Level” menu, select Major and Sharp and Flat Keys.



3. Make sure that nothing is selected under the “Options” menu.
4. Under the “Clefs” menu, select Treble. Complete 25 questions.
5. Select Bass from the “Clefs” menu and complete 25 more questions.

6. Select Minor from under the “Level” menu.



7. Select Treble under the “Clefs” menu. Complete 25 questions.
8. Select Bass under the “Clefs” menu. Complete the last 25 questions.
9. After you have completed all 100 questions, print out a progress report to hand in. Under the “File” menu, select “New Progress Report.” Type in your name and select print. Make sure you have selected the appropriate printer from the Chooser. You may also e-mail your progress report to Mr. Habermann as an attachment.

Unit 4 - Major and Minor Scales

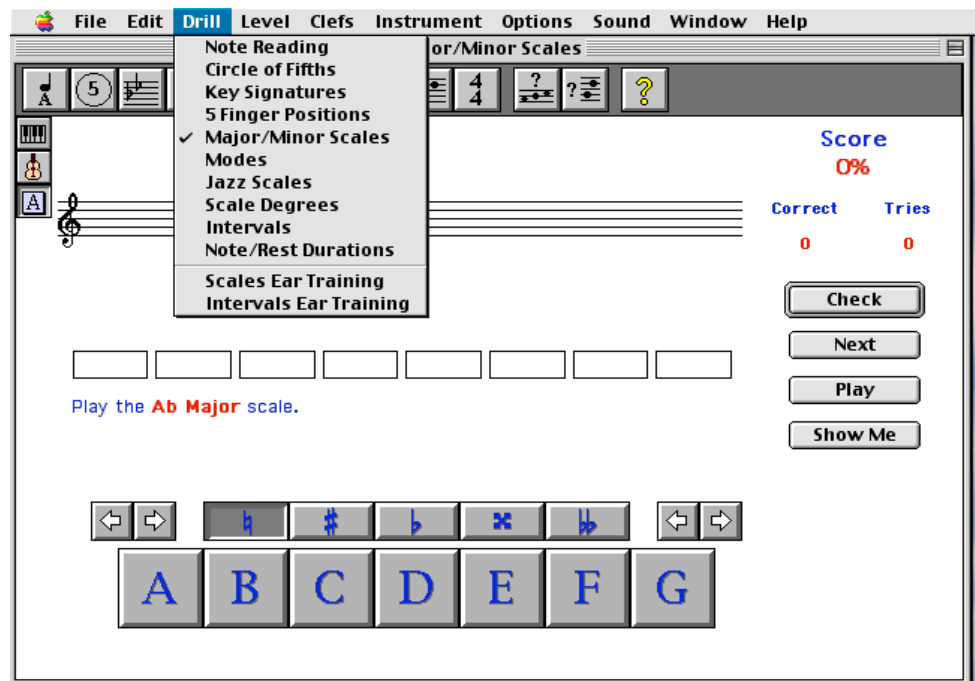
In this unit, you will learn how to construct both major and natural minor scales. Before beginning, you should select Music Lessons Help from the Help menu and read through the information on Major/Minor Scales found under the heading of Drills. You should also read the information on whole steps and half steps located in the Basics section under the heading of Theory. Additional information on whole and half steps can be found in the Five Finger Position section under the heading of Drills.

Setting the Program for the Written Test

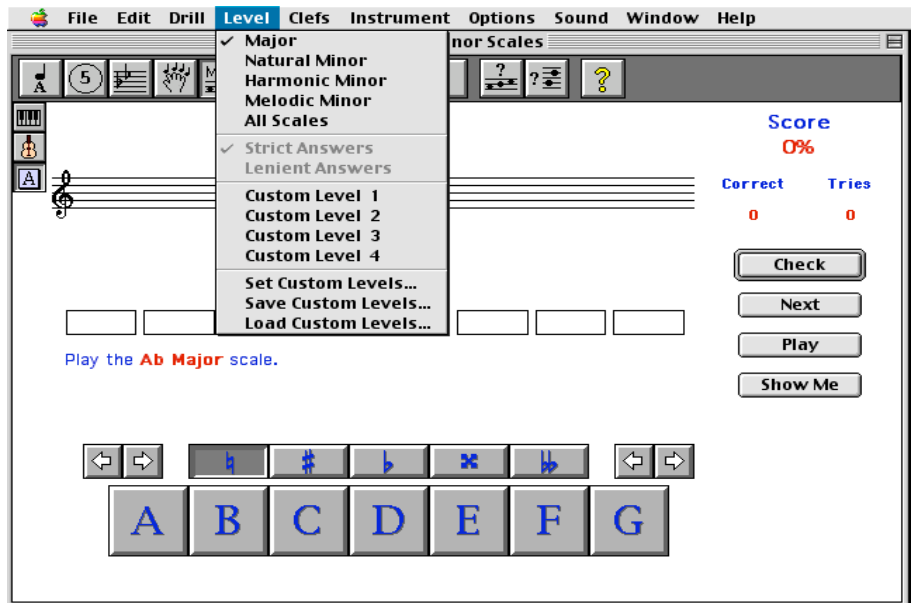
Please follow these directions for taking the test for Unit 4.

For this test, you will also need a piece of staff paper. Please get this from Mr. Habermann before beginning the test. You will be constructing a total of 12 scales, (three major scales in treble clef, three major scales in bass clef, three minor scales in treble clef, and three minor scales in bass clef.) For each scale, you must copy the scale onto the staff paper **before** selecting the "Check" button from the program. You will be handing in both the staff paper with the scales and a progress report. Each scale will be worth 8 points.

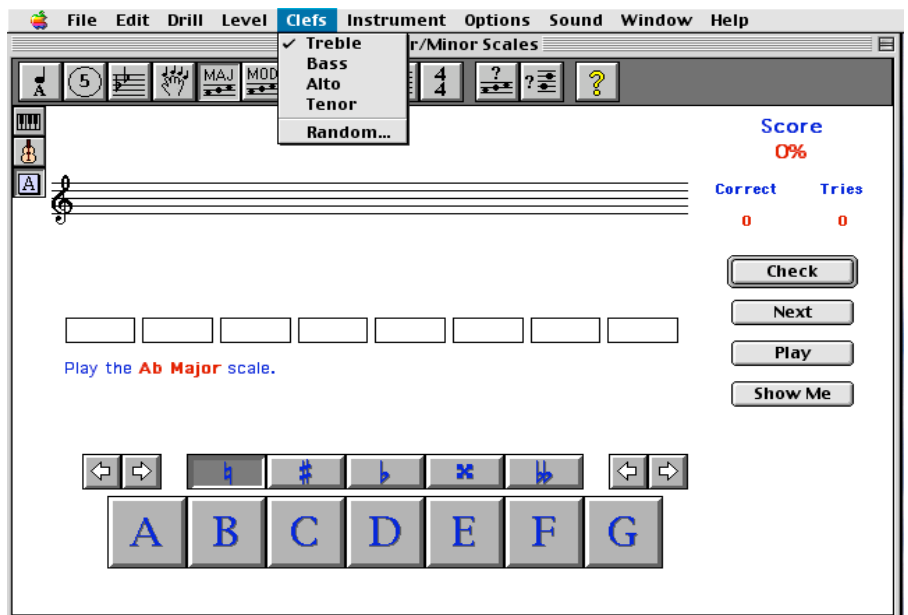
1. Open Music Lessons 1 and select Major/Minor Scales from the "Drill" menu.



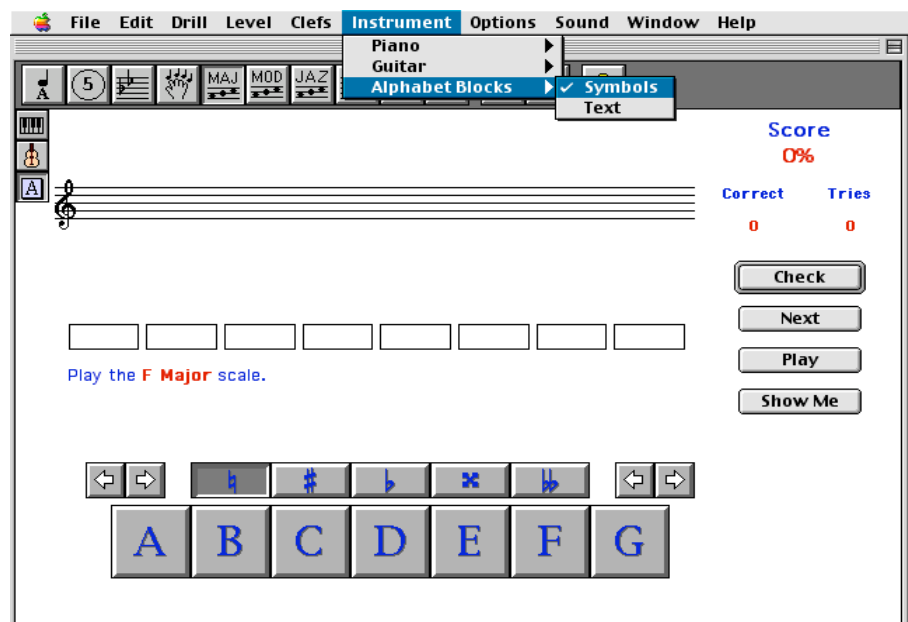
2. Under the “Level” menu, select Major and Strict Answers.



3. Under the “Clefs” menu, select Treble.

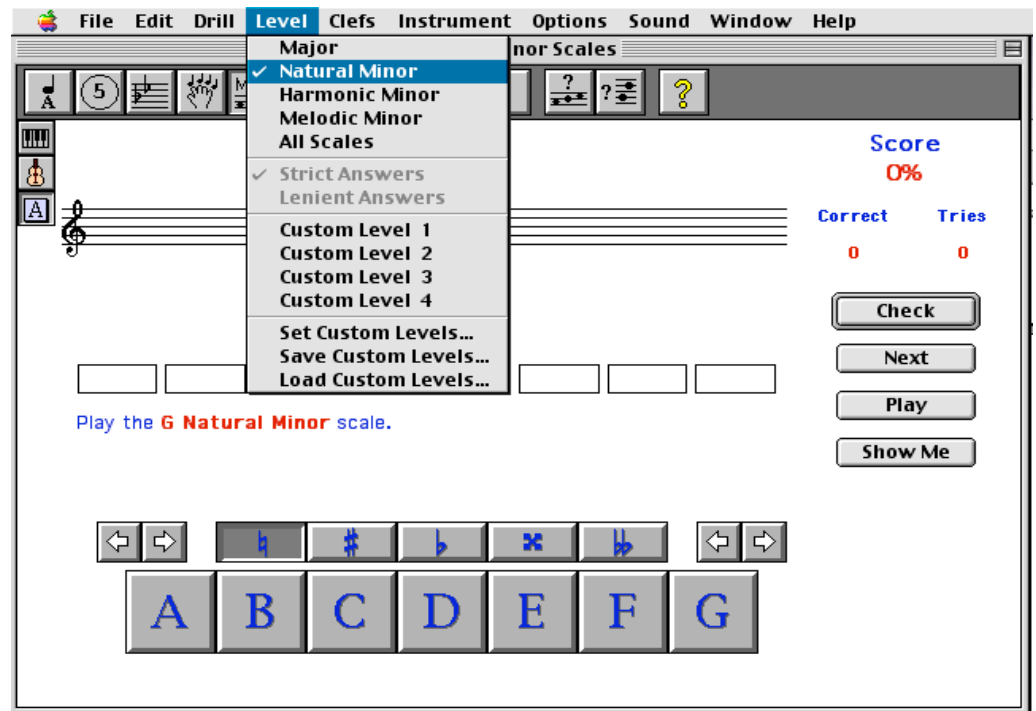


4. Under the “Instrument” menu, select Alphabet Blocks and Symbols.



5. Make sure that nothing is checked under the "Options" menu.
6. Build three major skills in treble clef. Remember to copy the scales onto the staff paper **before** checking your answers on the computer.
7. Select Bass from under the "Clefs" menu. Build three major scales in bass clef. Remember to copy the scales onto the staff paper **before** checking your answers on the computer.

8. Select Natural Minor from under the "Level" menu.



9. Select treble from under the "Clefs" menu. Build three natural minor skills in treble clef. Remember to copy the scales onto the staff paper **before** checking your answers on the computer.
10. Select Bass from under the "Clefs" menu. Build three natural minor scales in bass clef. Remember to copy the scales onto the staff paper **before** checking your answers on the computer.
11. After you have completed all 12 scales, print out a progress report to hand in. Under the "File" menu, select "New Progress Report." Type in your name and select print. Make sure you have selected the appropriate printer from the Chooser. Hand in your staff paper with your completed scales along with your progress report.

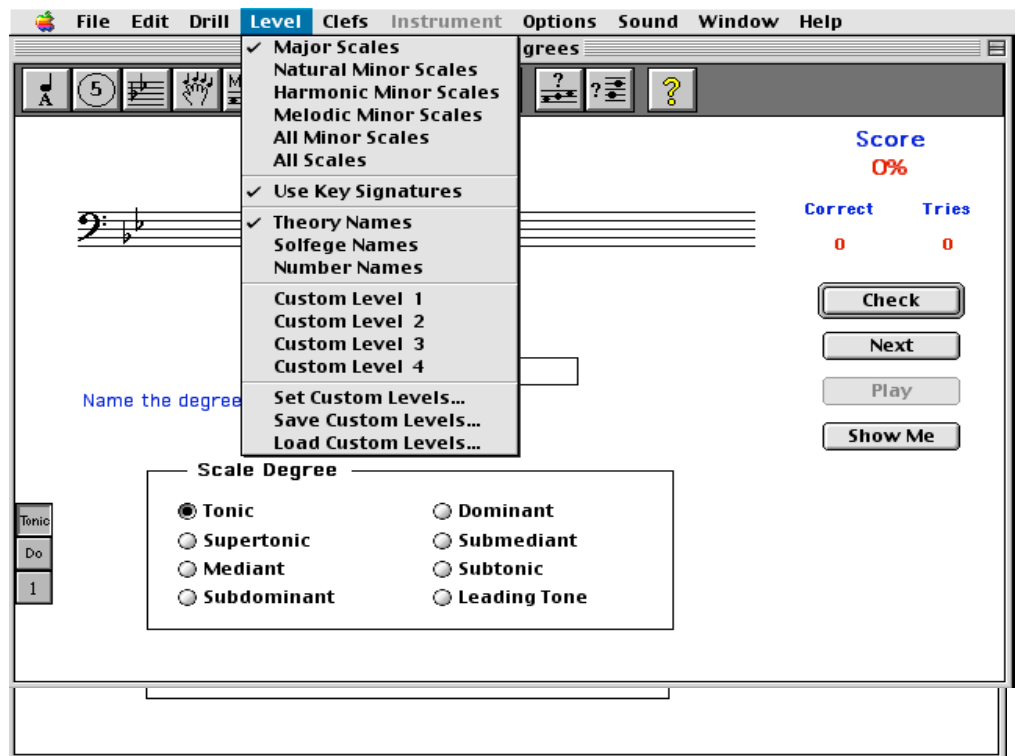
Unit 5 - Scale Degrees

In this unit you will study the various names for different notes (degrees) in scales. Before beginning, you should select Music Lessons Help from the Help menu and read through the information on Scale Degrees found under the heading of Note Reading.

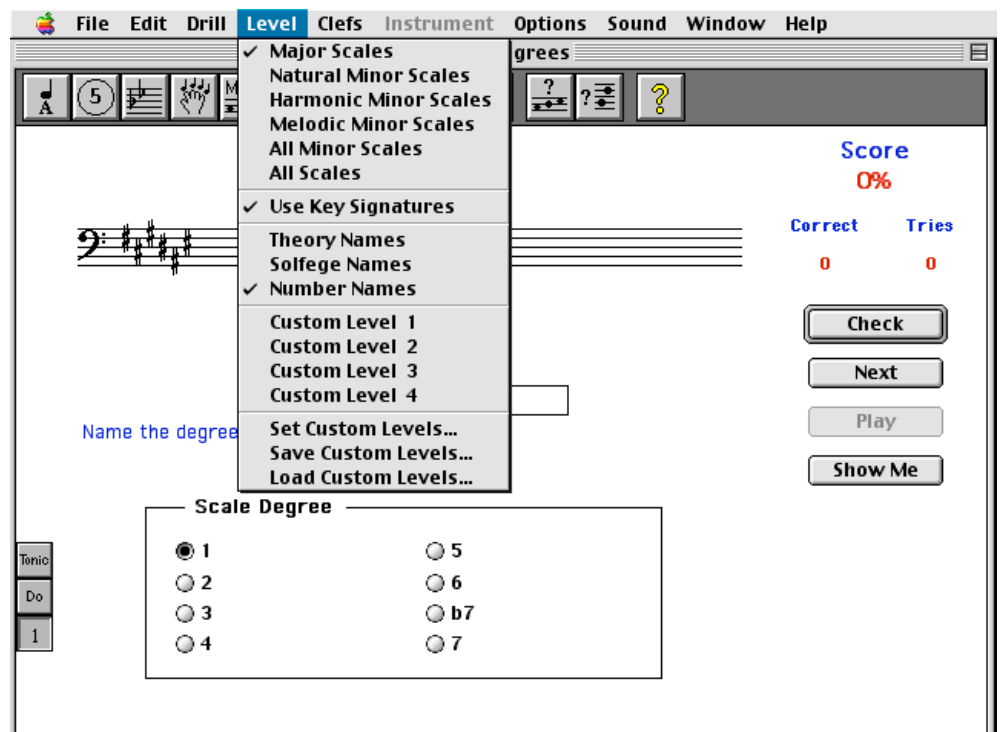
Setting the Program for the Written Test

Please follow these directions for taking the test for Unit 5.

1. Open Music Lessons 1 and select Scale Degrees from the "Drill" menu.



2. Under the "Level" menu, select the following items: Major Scales, Use Key Signatures, and Number Names.



3. Under the “Clefs” menu, you may select **either** Treble or Bass Clef. Use the one that you are most comfortable with.

4. Make sure that nothing is checked under the “Options” menu.

5. After answering 25 questions, select Solfege Names from under the “Level” menu.

6. Answer another 25 questions using the theory names for each scale degree.

7. After you have completed all 50 questions, print out a progress report to hand in. Under the “File” menu, select “New Progress Report.” Type in your name and select print. Make sure you have selected the appropriate printer from the Chooser. You may also e-mail your progress report to Mr. Habermann as an attachment.